

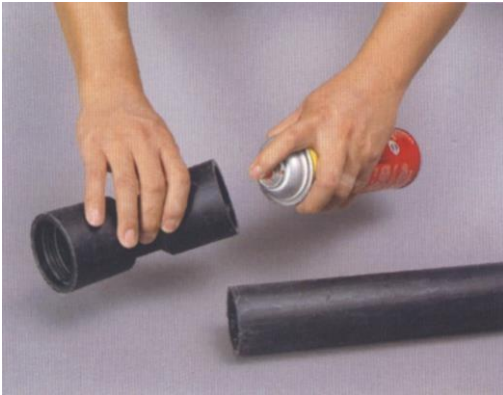
# Plug-in Fitting Installation Manual

## Features:

- Easy installation
- Compact size
- Suitable for drainage flat pipes
- Pressure resistance 1.5kgf/cm<sup>2</sup>

## Steps:

1



Spray the rubber inside the joint with wax or soapy water (to increase its lubricity)

2



Insert the pipe into the fitting and rotate it until it's firmly locked.